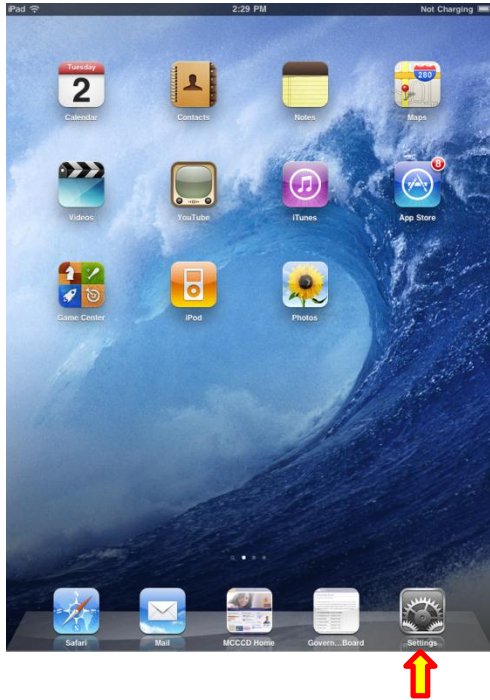
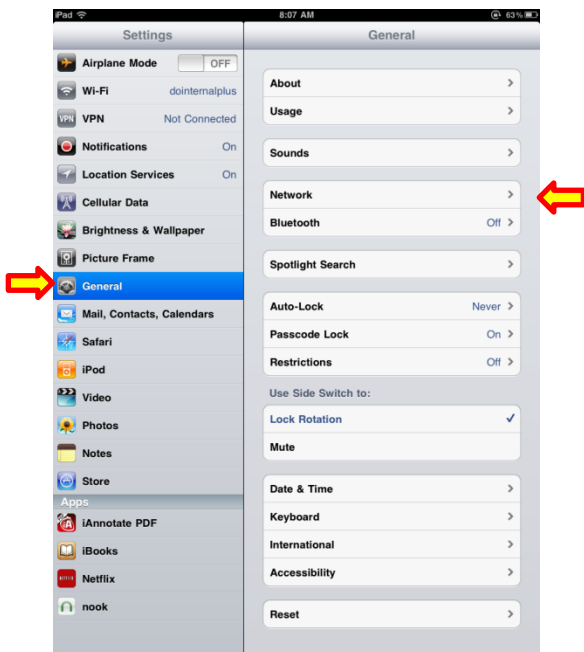


Configure DOINTERNALPLUS on iPad

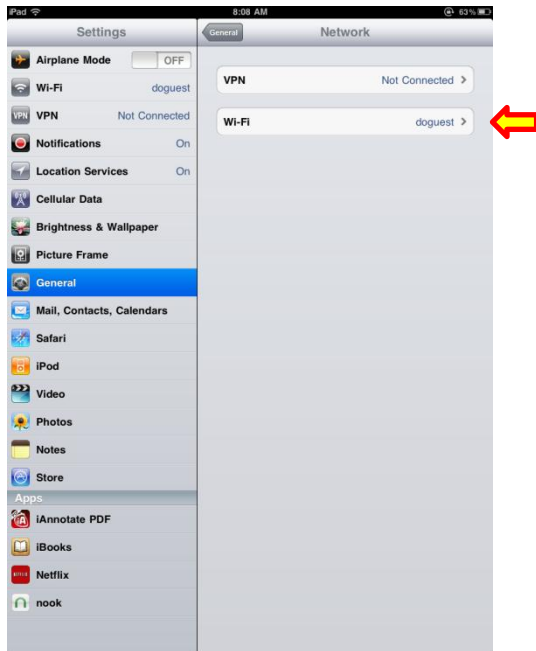
1. Tap **Settings**.



2. Tap **General** in the left pane. Tap **Network**.



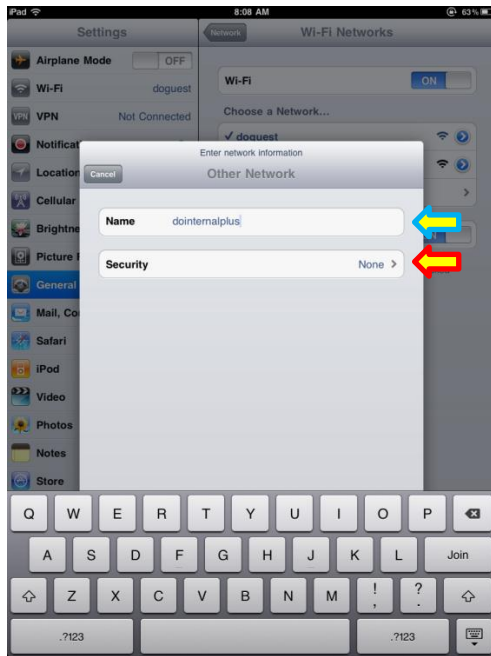
3. Tap **Wi-Fi**.



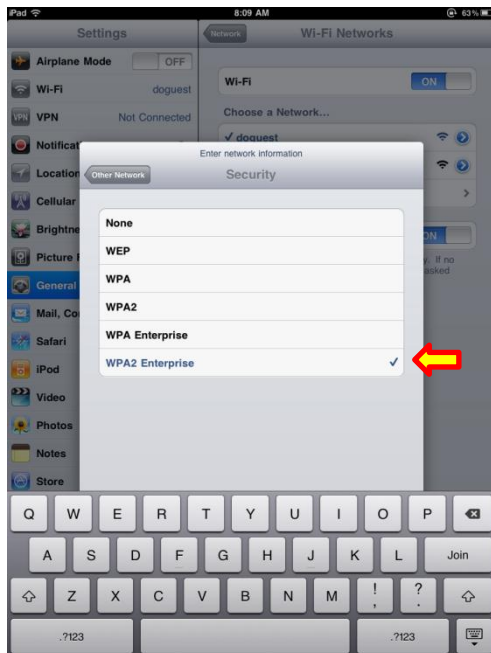
4. Tap **Other...**



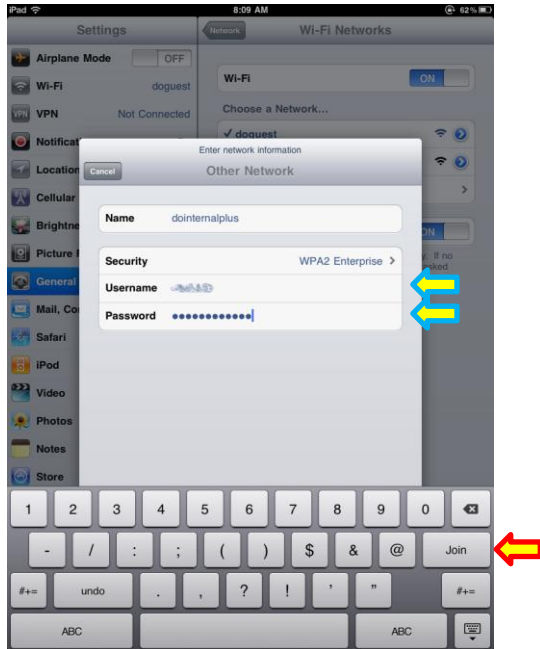
5. Type *dointernalplus* in the name field, and tap **Security**.



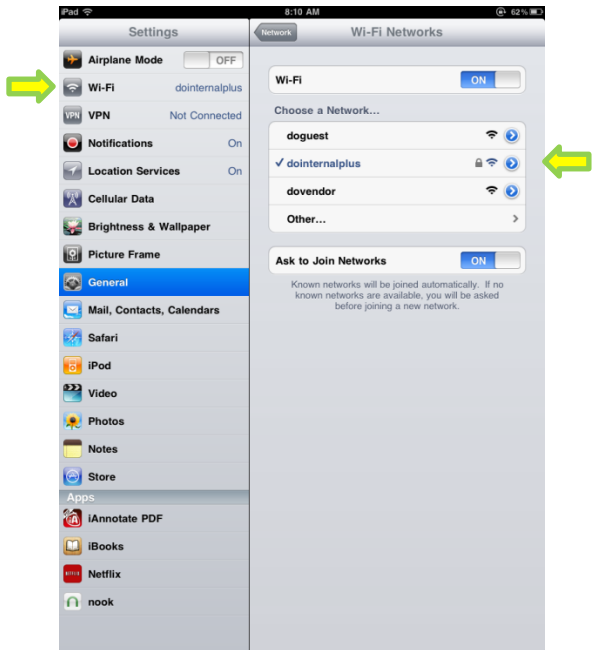
6. Tap **WPA2 Enterprise**.



7. Enter your **Maricopa Domain (AD) credential** under username. This is typically your last name and your first initial (no space or underscore). Enter your **password** (computer log-in) and tap **Join**.



8. If successful, you will see **dointernalplus** on the list of networks on the right with a checkmark next to it. You should also see **dointernalplus** as the connected network next to the Wi-Fi category on the left.



You are now connected to the District Office's secure internal network.